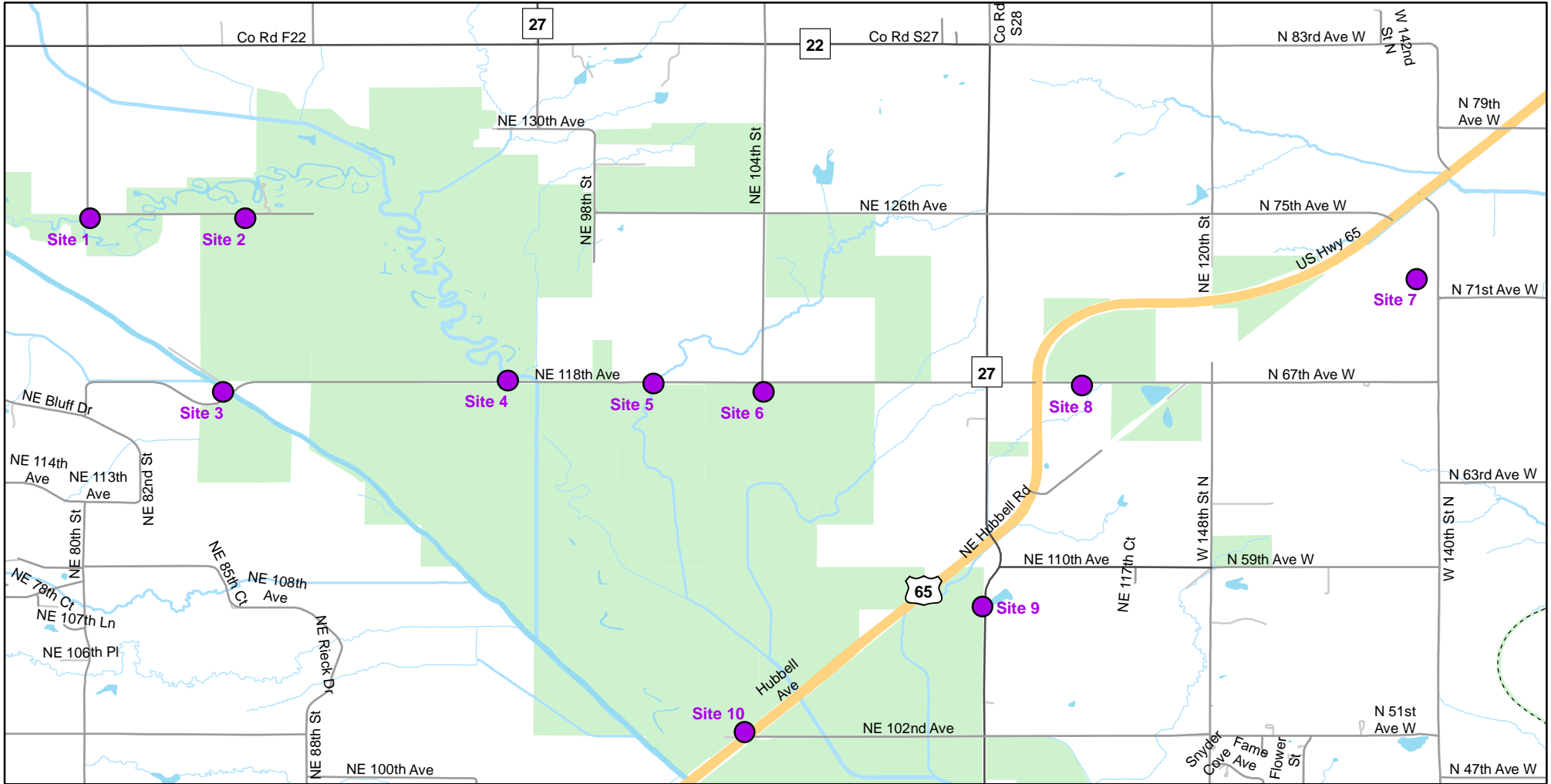




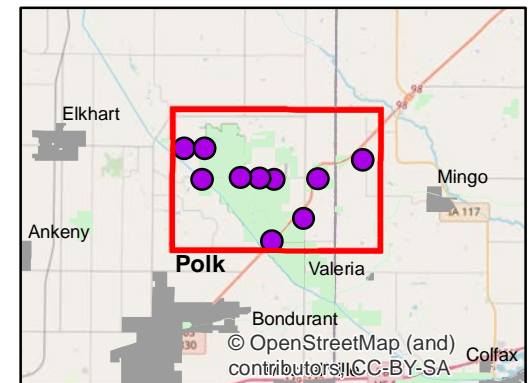
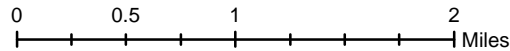
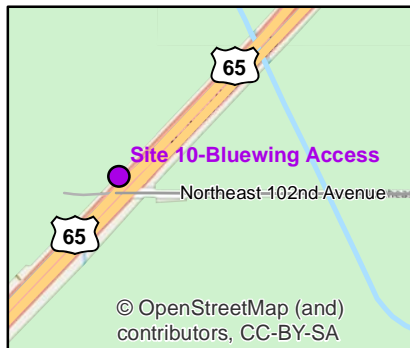
Volunteer Wildlife Monitoring Program (VWMP) Frog

Route ID: 212 County: Polk

Click for Google Maps to Site 1: <https://www.google.com/maps/dir/?api=1&destination=41.7906932651,-93.4444173865>



Enlarged View of Site 10



© OpenStreetMap (and) contributors, CC-BY-SA

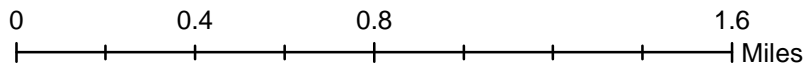
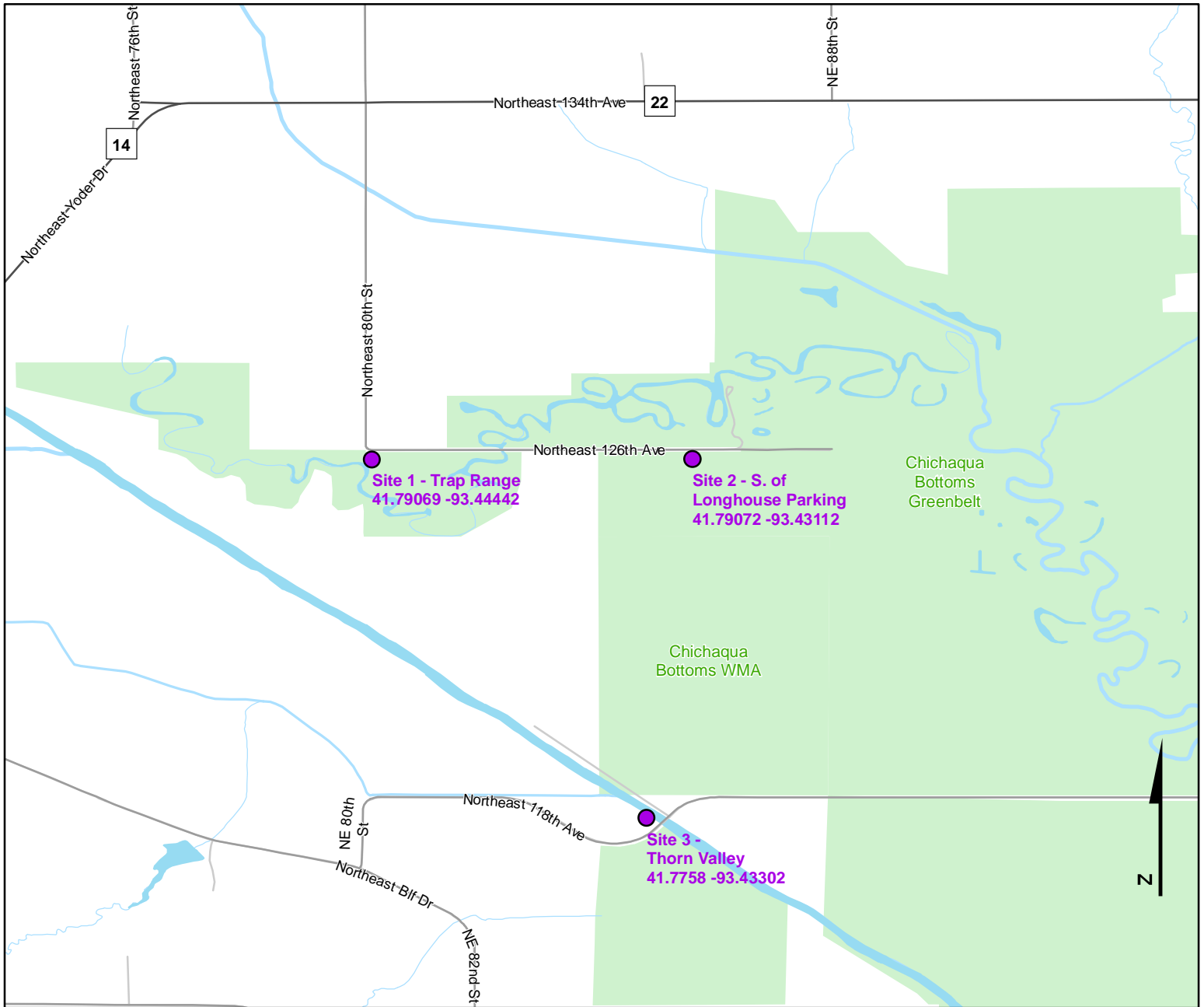
© OpenStreetMap (and) contributors, CC-BY-SA



Volunteer Wildlife Monitoring Program (VWMP) Frog and Toad Survey

Route ID: 212 County: Polk

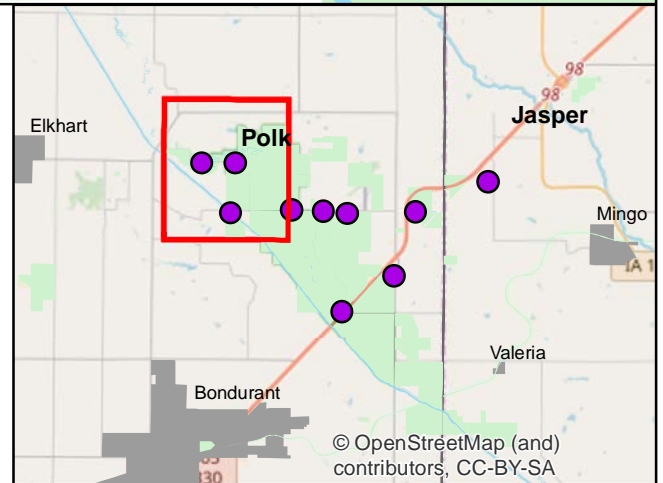
Click for Google Maps to Site 1: <https://www.google.com/maps/dir/?api=1&destination=41.7906932651,-93.4444173865>



DNR
**Volunteer
 Wildlife
 Monitoring
 Program**

Legend

----- Trails



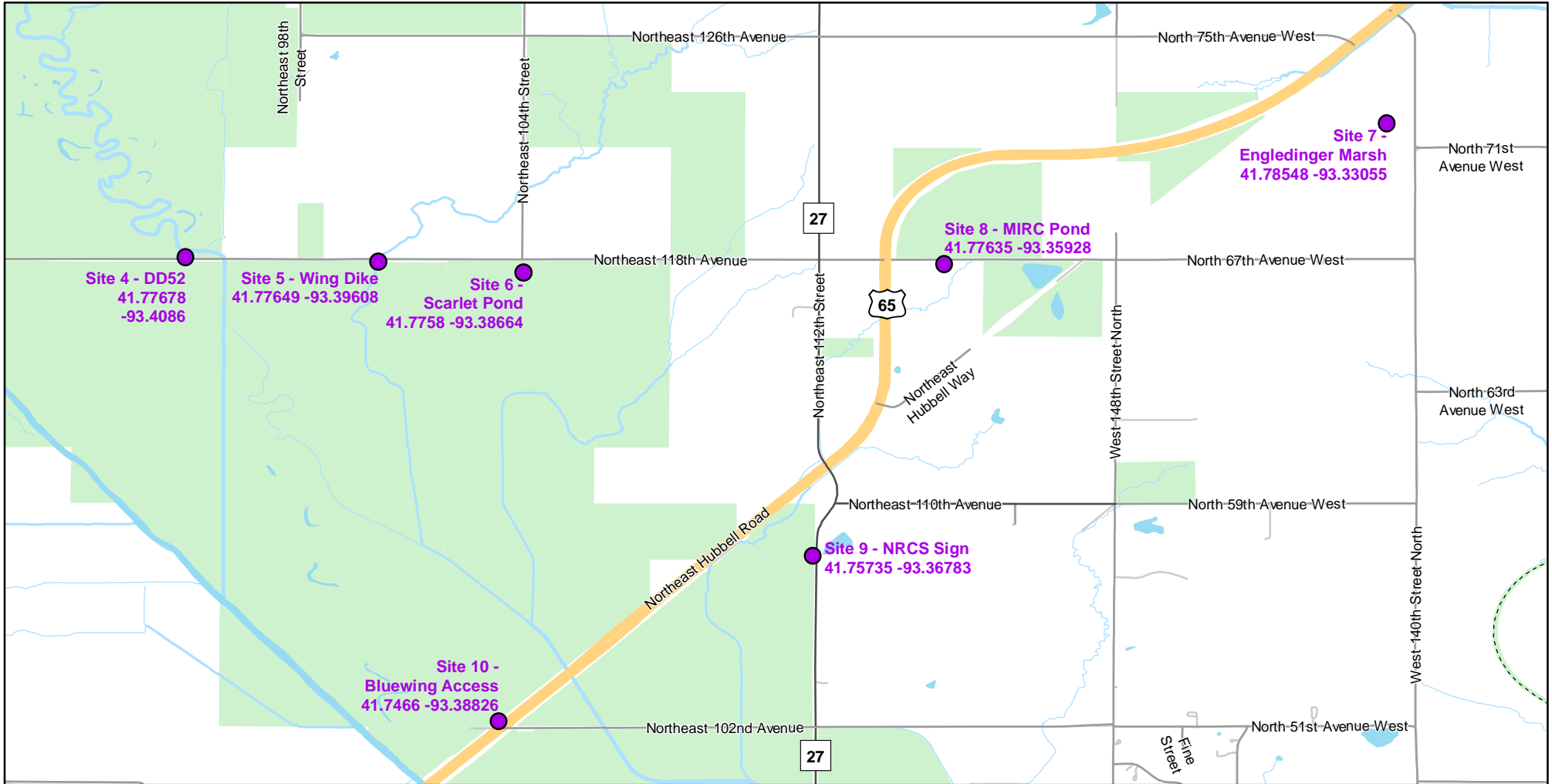
© OpenStreetMap (and contributors), CC-BY-SA



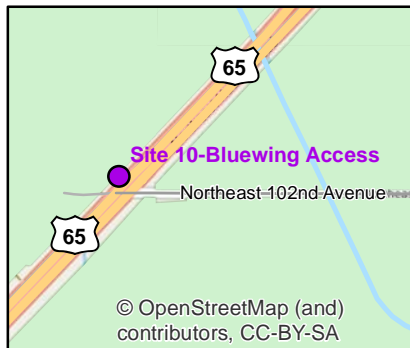
Volunteer Wildlife Monitoring Program (VWMP) Frog

Route ID: 212 County: Polk

Click for Google Maps to Site 1: <https://www.google.com/maps/dir/?api=1&destination=41.7906932651,-93.4444173865>

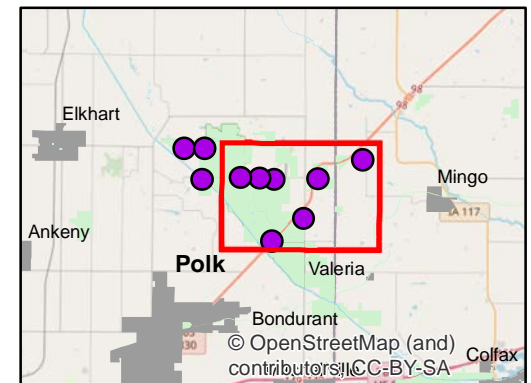
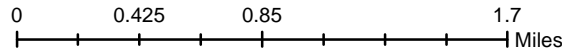


Enlarged View of Site 10



Legend

----- Trails





Frog and Toad Call Survey Route Description

Route ID **212**

Established: 2003

Site Number	Name	County	Latitude	Longitude	Directions
1	Trap Range	Polk	41.7906933	-93.4444174	At trap range parking lot at the corner of NE 80th St and NE 126th Ave
2	S. of Longhouse Parking	Polk	41.7907169	-93.4311185	South of Longhouse parking area
3	Thorn Valley	Polk	41.7758032	-93.433016	Roadside ditch, off of NE 118th Ave right by bridge over the south Skunk River
4	DD52	Polk	41.7767754	-93.4085961	1 1/4 mile east from Thorn Valley site on 118th Ave
5	Wing Dike	Polk	41.7764949	-93.3960804	1/2 mile west from 118th Ave and 104th St intersection at culvert
6	Scarlet Pond	Polk	41.7757975	-93.3866426	Pond directly south of intersection on 118th Ave and 104th St intersection
7	Engledinger Marsh	Polk	41.785484	-93.3305484	On west side of 140th St N, just north of intersection with 71st Ave W
8	MIRC Pond	Polk	41.7763457	-93.3592836	Ponds on north side of 118th Ave just east of Hwy 65 intersection
9	NRCS Sign	Polk	41.7573499	-93.3678266	South of the intersection of 110th Ave and Co Rd S27 (112th St), look for NRCS Sign
10	Bluewing Access	Polk	41.7466003	-93.3882594	